

**Virology Laboratory Rabies Testing Services
Katherine A. Kelley State Public Health Laboratory
Connecticut Department of Public Health**

**Randy Downing
Supervising Microbiologist
395 West Street
Rocky Hill, CT 06067
860-920-6640
randy.downing@ct.gov**

Submitting Specimens to the CT DPH Laboratory

Conducted to guide the medical management of persons who have exposure (bite or other saliva contact of a mucus membrane or open wound) to suspected rabid animals

Animals accepted for rabies examination

1. Raccoons, skunks, other wild carnivores (e.g., fox, coyote, or bobcat) and groundhogs that have potentially exposed a person
2. Bats that have direct contact or are found in a room with a person who cannot communicate seeing it or knowing if they may have been bitten
3. Unvaccinated cats and dogs that have bitten a person.

Submit only the heads of cats and dogs regardless of the size of the animal.

Submitting Specimens to the CT DPH Laboratory

Animals accepted for rabies examination after consultation with CTDPH, the local health department, or as instructed by an Animal Control Officer

- 1. Small rodents (e.g., mice, rats, squirrels, chipmunks, moles) and wild rabbits that have bitten or otherwise exposed a person**
- 2. Bats found in a home, but not in a room with a person**
- 3. Cats, dogs, and other domestic animals that are current on their rabies vaccination and have bitten a person**

Vaccinated domestic animals that bite people should be placed in quarantine for 14 days and only euthanized, and submitted for testing if either suspected by a veterinarian of being rabid or ordered by an Animal Control Officer. Contact the Department of Agriculture, Animal Control Division for questions concerning quarantine of domestic animals, (860) 713-2506.

Submitting Specimens to the CT DPH Laboratory

Animals NOT accepted for rabies examination

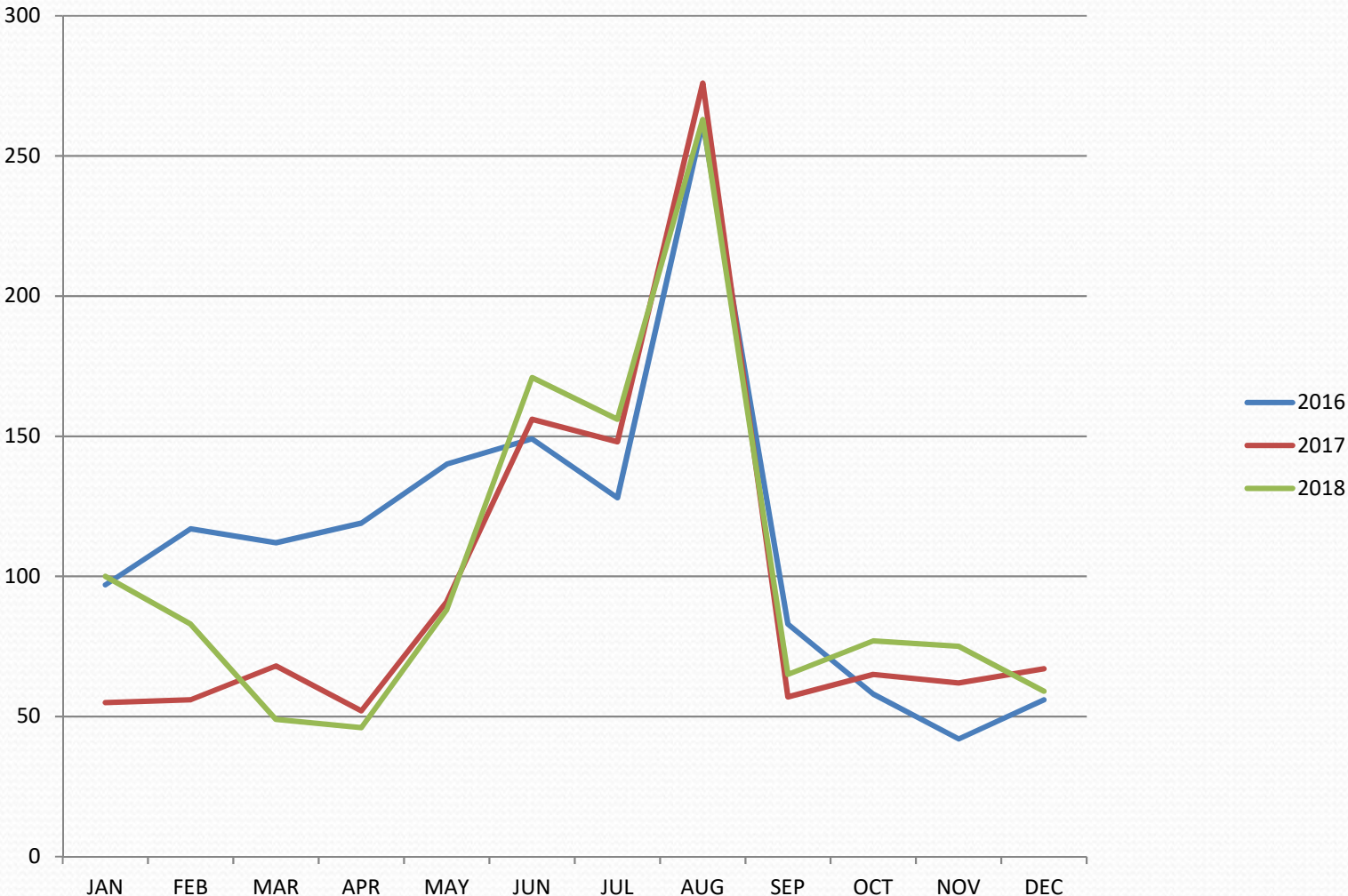
1. Live animals (ALL animals must be euthanized prior to submission)
 2. Animals that have not bitten or otherwise exposed a person
 3. Wild animals in contact only with domestic animals, i.e. no human exposure
 4. Bats submitted by nuisance wildlife control operators (NWCOS)
 5. Whole cats or dogs
 6. Livestock for which no human exposure has occurred-
- UCONN Veterinary Medical Diagnostic Laboratory
CVMDL

Rabies Additional Notes

- Animals not accepted for testing by the CT SPHL due to no human exposure can be submitted for testing for a fee to the UCONN VMDL
- Authorized Submitters for testing at CT SPHL
 1. Notified of the results and will provide consultation regarding the need for testing the animal include ACOs, Environmental Conservation Police (ENCON) Officers, healthcare providers, local HDs, police officers, veterinarians

It is acceptable for a private citizen or NWCO to transport an animal that has been deemed acceptable for rabies testing to the CT SPHL. An authorized submitter must always be designated as the report recipient on the submission form.

Rabies Test Volume



Rabies Cases of Note

- Rabies in a Dog Imported from Egypt — Connecticut, 2017

<https://www.cdc.gov/mmwr/volumes/67/wr/mm6750a3.htm>

December 26, 2017, a dog imported into the United States from Egypt was identified with rabies

- Egyptian-based animal rescue organization delivered four dogs from Cairo, Egypt, to a flight parent to JFK on 12/20
- Transferred the dogs to foster families; the dogs ultimately were adopted in three states (CT, MD, VA)
- Connecticut DPHL confirmed the presence of a canine rabies virus variant in one of the dogs adopted by a Connecticut family; Africa 4 subspecies canine rabies virus circulating in Egypt; CDC 12/28
- CDC investigation revealed the possibility of falsified rabies vaccination documentation presented on entry at JFK
- Connecticut public health officials, in accordance with national guidelines recommended PEP for the flight parent bitten in Cairo, the caretakers of dog A, and the veterinary technician who was bitten.



- **Katherine A. Kelley State Public Health Laboratory**

Virology Laboratory 860-920-6662 , Supplies and Requisitions 860-920-6674, Randy Downing 860-920-6640 randy.downing@ct.gov

- **Connecticut Department of Public Health, Epidemiology and Emerging Infections Program at (860) 509-7994**

concerning human exposure, prophylaxis, or submission of animals

- **Department of Agriculture, Animal Control Division or the State Veterinarian at (860) 713-2506**

concerning livestock and domestic animal exposures

- **UCONN Veterinary Medical Diagnostic Laboratory at (860) 486-3738.**

submission of animals that do not satisfy criteria for testing at the CTPH Laboratory

- **Local ACO or the Department of Energy & Environmental Protection, Wildlife Division at (860) 424-3011. For emergencies call (860) 424-3333.**

concerning wildlife (unusual behavior, rabies, potential exposures, etc.)

Questions

